

# PEDESTRIAN LAWS

Pedestrians should always follow traffic control signals, unless directed by law enforcement or other traffic officials. (552.001)

While walking in crosswalks, pedestrians have the right of way. Drivers must yield/stop for pedestrians in crosswalks. (552.003)

If crossing somewhere other than a crosswalk, pedestrians must yield to vehicles. (552.005)

You may not cross diagonally or between two adjacent crosswalks, unless clearly marked as a diagonal crosswalk. (552.005)  
A good rule of thumb, if you see a crosswalk, use it!

If a sidewalk is accessible and available, a pedestrian may not walk on the road. (552.006)

*Laws are referenced from Texas Traffic Codes.*

# DRIVER LAWS

Drivers are required to yield to bicyclists, just as if they would to other cars. (551.101)

Exercise care to avoid collisions with pedestrians. (552.008)

Crosswalks exist across all legs of four-way intersections even when they aren't painted. (541.302)

Stop for a school bus when the flashing red lights are activated. (545.066) Violations can lead to a \$1,000 fine.

Obey flashing beacons around school zones. Drivers can face up to \$200 fines depending on city laws.

Pass a bicyclist on the left and at a safe distance. (545.053)

Cell phone use is prohibited while driving through an active school zone. (545.425)

*Laws are referenced from Texas Traffic Codes.*

# BIKE LAWS

When riding your bike, be sure to follow all traffic laws, like stopping at stop signs and red lights. (551.101)

Bicyclists shall ride only one rider per seat. (551.102a) It's unsafe to have someone ride on the handlebars.

Texas law requires at least one hand on the handlebars at all times. (551.102c)

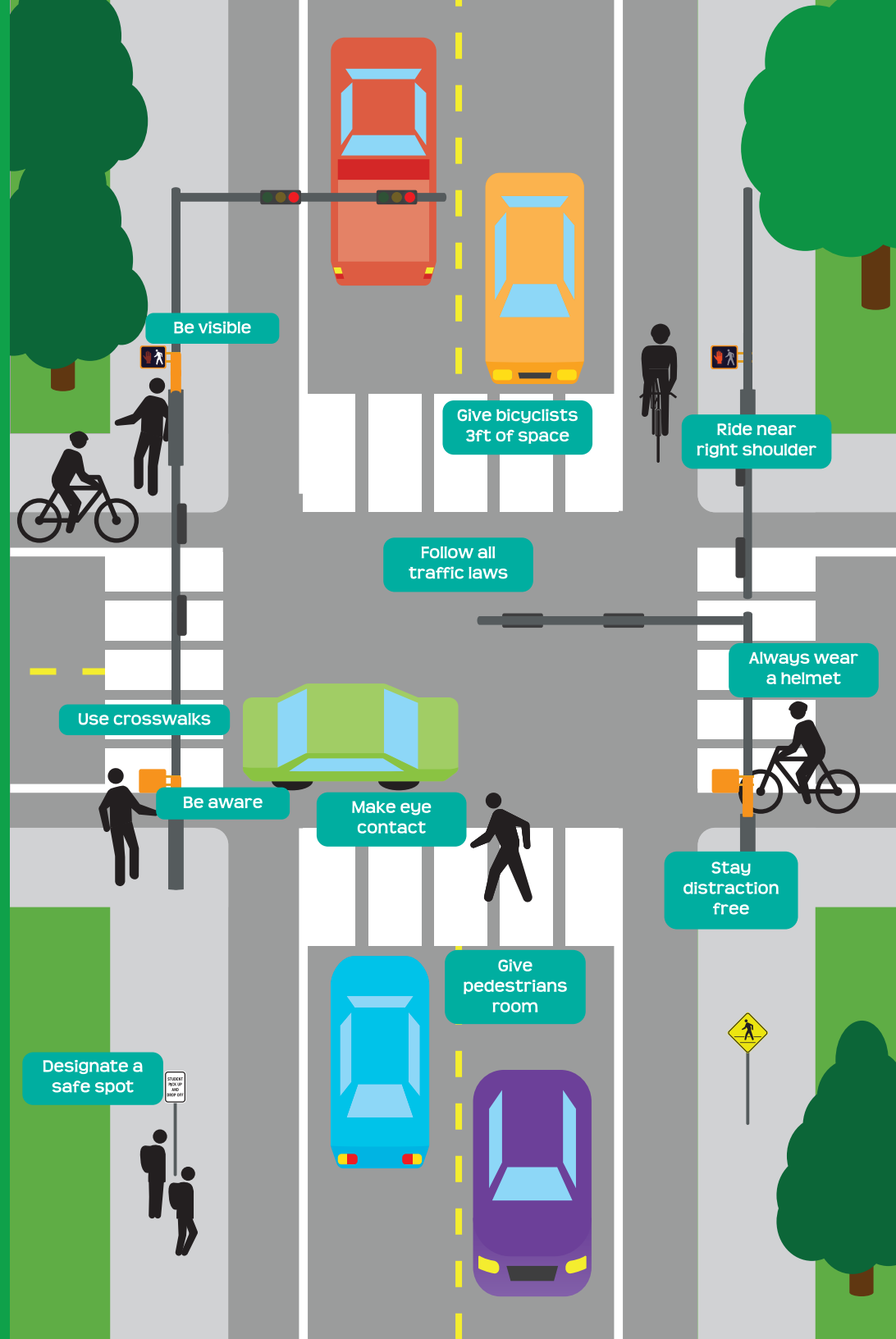
Ride near the curb and go in the same direction as other traffic (551.103).

Brakes on your bicycle should be capable of making the braked wheel skid on dry, level, clean pavement. (551.104a)

While riding your bike at night, make sure to use a white light on the front and a red light/reflector on the rear. (551.104b)

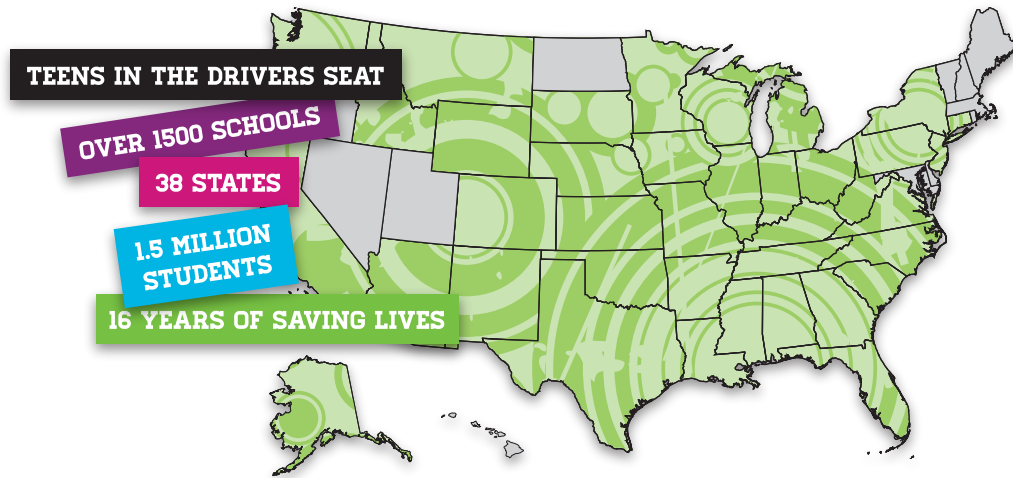
Don't forget to use hand and arm signals. (545.107)

*Laws are referenced from Texas Traffic Codes.*



# ABOUT US

# SAFETY TIPS



Fostering a traffic safety culture on campus starts with students. Started in 2002, Teens in the Driver Seat is the first peer-to-peer program for teens that focuses solely on traffic safety and addresses all major risks for teens. Teens in the Driver Seat is a Certified Peer Program through the National Association of Peer Program Professionals.

Our reach includes 38 different states, 1,500 unique schools, and 1.5 million students.

